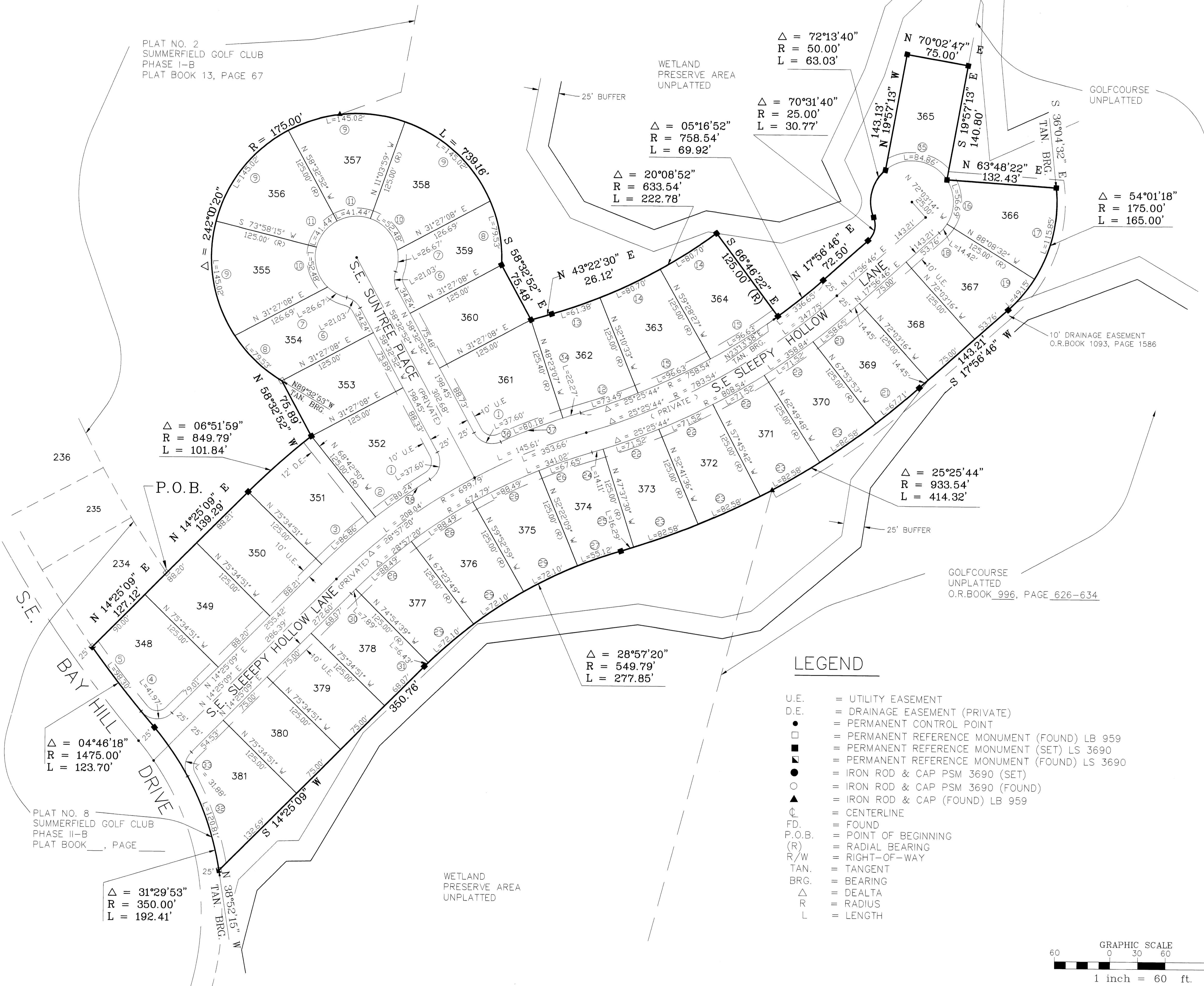
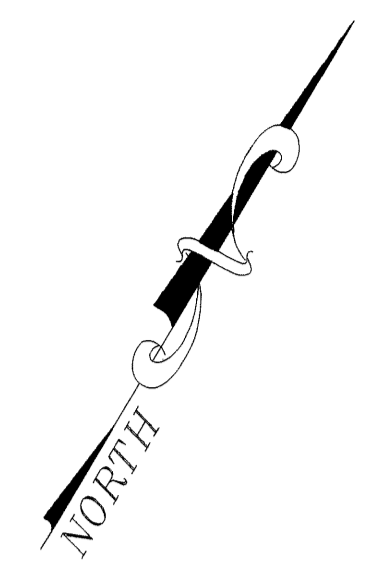


PLAT NO. 9

SUMMERFIELD GOLF CLUB PHASE II-C, A P.U.D.

LYING IN SECTION 35, TOWNSHIP 38 SOUTH, RANGE 41 EAST
MARTIN COUNTY, FLORIDA



CURVE	RADIUS	LENGTH	CHORD	DELTA
(1)	25.00'	37.60'	34.16'	86°10'37"
(2)	724.79'	80.24'	80.20'	06°20'35"
(3)	724.79'	86.86'	86.81'	06°52'00"
(4)	25.00'	41.97'	37.28'	96°11'55"
(5)	1475.00'	98.30'	98.28'	03°49'06"
(6)	25.00'	21.03'	20.41'	48°11'23"
(7)	50.00'	26.67'	26.36'	30°33'54"
(8)	175.00'	79.53'	78.85'	26°02'24"
(9)	175.00'	145.02'	140.91'	47°28'53"
(10)	50.00'	52.48'	50.11'	60°08'35"
(11)	50.00'	41.44'	40.26'	47°28'53"
(12)	758.54'	73.49'	73.46'	05°33'03"
(13)	633.54'	61.38'	61.35'	05°33'03"
(14)	633.54'	80.70'	80.65'	07°17'55"
(15)	758.54'	96.63'	96.56'	07°17'55"
(16)	50.00'	56.68'	53.70'	64°57'17"
(17)	175.00'	115.85'	113.75'	37°55'46"
(18)	50.00'	14.42'	14.37'	16°31'41"
(19)	175.00'	49.15'	48.99'	16°05'32"
(20)	808.54'	58.65'	58.64'	04°09'22"
(21)	933.54'	67.71'	67.70'	04°09'22"
(22)	808.54'	71.52'	71.50'	05°04'06"
(23)	933.54'	82.58'	82.55'	05°04'06"
(24)	808.54'	14.11'	14.10'	00°59'58"
(25)	933.54'	16.29'	16.29'	00°59'59"
(26)	674.79'	67.65'	67.62'	05°44'39"
(27)	549.79'	55.12'	55.10'	05°44'39"
(28)	674.79'	88.49'	88.43'	07°30'50"
(29)	549.79'	72.10'	72.05'	07°30'50"
(30)	674.79'	7.89'	7.89'	00°40'11"
(31)	549.79'	6.43'	6.43'	00°40'11"
(32)	350.00'	120.81'	120.21'	19°46'38"
(33)	25.00'	31.88'	29.76'	73°04'03"
(34)	724.79'	22.27'	22.27'	01°45'37"
(35)	50.00'	84.86'	75.04'	97°14'36"
(36)	724.79'	80.18'	80.14'	06°20'18"
(37)	724.79'	102.36'	102.36'	08°05'55"
(38)	724.79'	167.11'	166.74'	13°12'36"

LEGEND

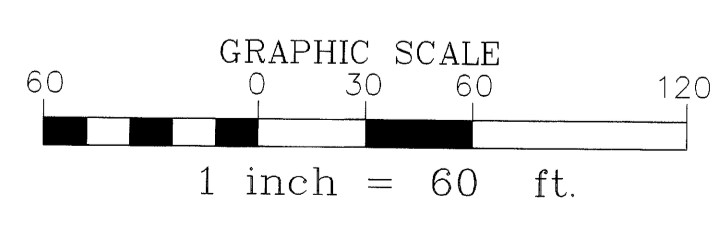
- U.E. = UTILITY EASEMENT
- D.E. = DRAINAGE EASEMENT (PRIVATE)
- = PERMANENT CONTROL POINT
- = PERMANENT REFERENCE MONUMENT (FOUND) LB 959
- = PERMANENT REFERENCE MONUMENT (SET) LS 3690
- = PERMANENT REFERENCE MONUMENT (FOUND) LS 3690
- = IRON ROD & CAP PSM 3690 (SET)
- = IRON ROD & CAP PSM 3690 (FOUND)
- ▲ = IRON ROD & CAP (FOUND) LB 959
- ⊙ = CENTERLINE
- FD. = FOUND
- P.O.B. = POINT OF BEGINNING
- (R) = RADIAL BEARING
- R/W = RIGHT-OF-WAY
- TAN. = TANGENT
- BRG. = BEARING
- Δ = DELTA
- R = RADIUS
- L = LENGTH

NOTICE: THERE MAY BE ADDITIONAL RESTRICTIONS THAT ARE NOT RECORDED ON THIS PLAT THAT MAY BE FOUND IN THE PUBLIC RECORDS OF THIS COUNTY.

THIS PLAT, AS RECORDED IN ITS ORIGINAL FORM IN THE PUBLIC RECORDS, IS THE OFFICIAL DEPICTION OF THE SUBDIVIDED LANDS DESCRIBED HEREON AND WILL IN NO CIRCUMSTANCES BE SUPPLANTED IN AUTHORITY BY ANY OTHER FORM OF THE PLAT, WHETHER GRAPHIC OR DIGITAL.

IN THE EVENT THAT MARTIN COUNTY DISTURBS THE SURFACE OF A PRIVATE STREET DUE TO MAINTENANCE, REPAIR OR REPLACEMENT OF A PUBLIC IMPROVEMENT LOCATED THEREIN, THEN THE COUNTY SHALL BE RESPONSIBLE FOR RESTORING THE STREET SURFACES ONLY TO THE EXTENT WHICH WOULD BE REQUIRED IF THE STREET WERE A PUBLIC STREET, IN ACCORDANCE WITH COUNTY SPECIFICATIONS.

BASE OF BEARINGS: THE SOUTH LINE OF SECTION 35, TOWNSHIP 38 SOUTH, RANGE 41 EAST HAVING A BEARING OF N 89°50'53" E AND ALL OTHER BEARINGS SHOWN HEREON ARE RELATIVE THERETO.



ALLEN E. BECK, INC.
 PROFESSIONAL LAND SURVEYORS
 608 S.W. BAYSHORE BLVD.
 PORT ST. LUCIE, FLORIDA 34983
 (561) 340-1432 LB 6790

SCALE 1" = 60' JOB NO. 97-3514
 SHEET 2 OF 2

PLAT NO. 2
SUMMERFIELD GOLF CLUB
PHASE I-B
PLAT BOOK 13, PAGE 67

PLAT NO. 8
SUMMERFIELD GOLF CLUB
PHASE II-B
PLAT BOOK _____, PAGE _____

WETLAND
PRESERVE AREA
UNPLATTED

GOLFCOURSE
UNPLATTED

GOLFCOURSE
UNPLATTED
O.R. BOOK 996, PAGE 626-634

Δ = 06°51'59"
R = 849.79'
L = 101.84'

Δ = 04°46'18"
R = 1475.00'
L = 123.70'

Δ = 31°29'53"
R = 350.00'
L = 192.41'

Δ = 20°08'52"
R = 633.54'
L = 222.78'

Δ = 05°16'52"
R = 758.54'
L = 69.92'

Δ = 70°31'40"
R = 25.00'
L = 30.77'

Δ = 72°13'40"
R = 50.00'
L = 63.03'

Δ = 54°01'18"
R = 175.00'
L = 165.00'

Δ = 25°25'44"
R = 933.54'
L = 414.32'

Δ = 28°57'20"
R = 549.79'
L = 277.85'